

AYSO EXPO 2024

CHANGING THE GAME



AMERICAN YOUTH SOCCER ORGANIZATION

Refereeing with Fewer Than Three

AYSO National Referee Program

Bringing the World's Game to Communities Everywhere

EVERYONE PLAYS®

BALANCED TEAMS

OPEN REGISTRATION

POSITIVE COACHING

GOOD SPORTSMANSHIP

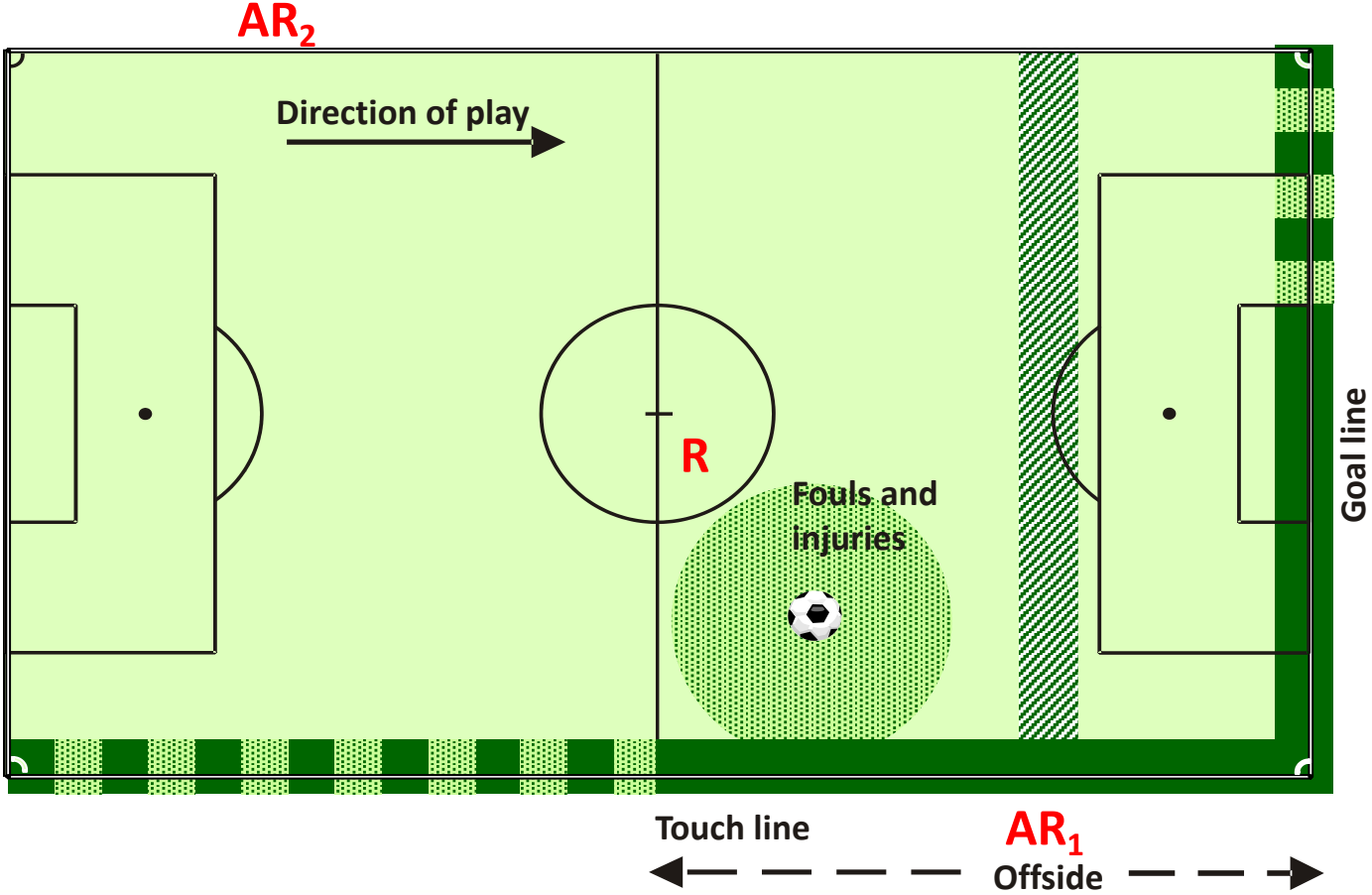
PLAYER DEVELOPMENT



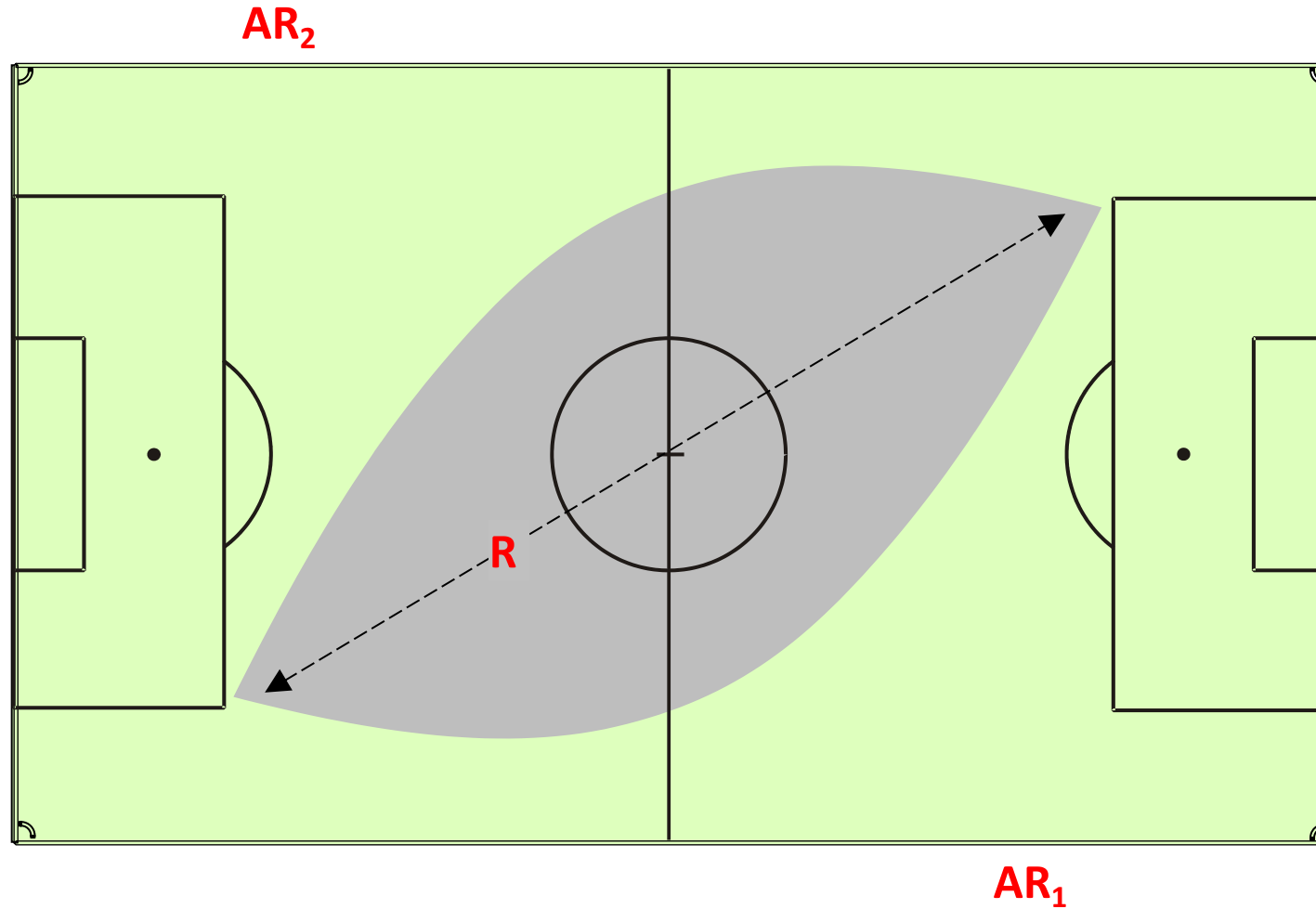
Course Objectives

- Briefly review DSC (Diagonal System of Control)
- Understand what needs to change if fewer than 2 ARs
- Provide guidance in managing match with club linesman

DSC with Three Referees: Boxing Play



Three Referees: Four Eyes on Active Play



What Do Officials Need to Monitor?

- Scoring of a goal
- Ball over a boundary line
- Offside
- Fouls/misconduct
- Technical offenses (on restarts)
- Issues outside the touch line

What is impact if fewer than three?

- Referee only?
- Referee + 2 club linesmen?
- Referee + AR + club linesman?

What changes with fewer than three?

- The referee's position is driven by match priorities.
- The referee's priority choices will depend on the player age and skill.
- Increased physical effort required by Referee to get into position to assess priorities.

Impact of Fewer Than Three

- Monitoring usual events (offside; restarts; player conduct; boundary line) become more challenging.
- Referee must establish priorities.
 - Priorities must be adjusted as game progresses.
 - Priorities affect positioning.
- Using club linesmen reduces some compromises the Referee must make.
- Physical demands increase for the referee.

Manage Expectations Prior to Kickoff

Meet with both coaches

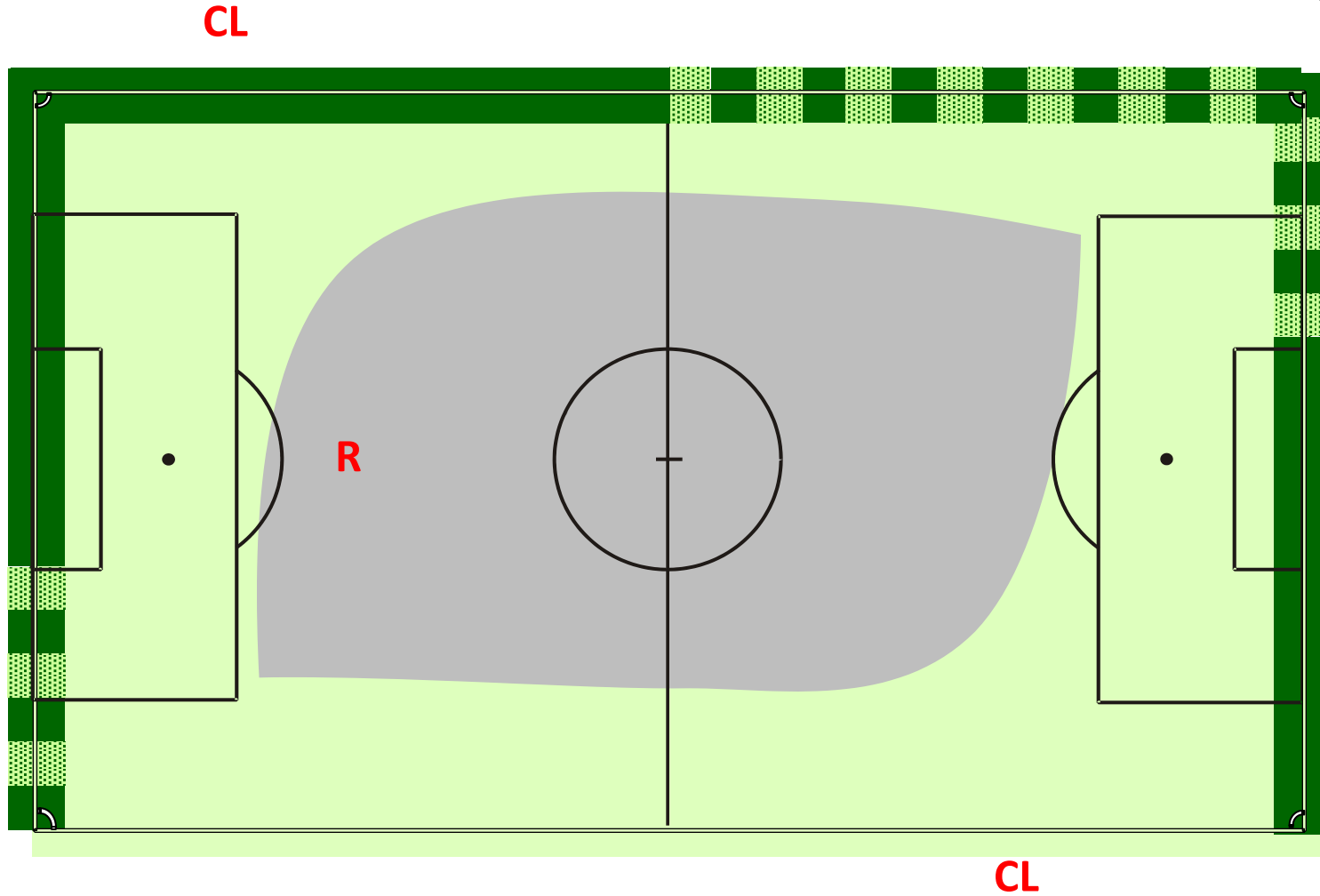
- Describe how you are handling lack of qualified AR(s)
 - May request them to recruit volunteer club linesman
- Remind coaches that certain calls may be missed due to lack of AR
 - Offside
 - Ball in/out of play
 - Some fouls

Re-iterate with team captains/players during equipment check or coin toss (more effective with older teams)

Positioning: Starting When Solo

- Start with the standard diagonal.
- Modify position as game requires.
 - Move with play; don't wait for it to pass by.
 - Attempt to get required depth and width
- Take advantage of restarts to reestablish position.

One Referee: Realistic Referee Coverage



Refereeing Solo: Implications

- Ideal: Referee goes deeper and wider than in DSC;
 - Reality: coverage will be shallower and narrower.
- Judging ball on goal line is next to impossible.
- Judging close offside requires being ahead of the ball at both ends, which is extremely hard or impossible.
- For older players, tight control is essential.
 - Limit use of advantage

One Referee: Recruit a Club Linesman or Two!

Why recruit linesmen?

- Today's linesman is tomorrow's referee (linesmen are good source of recruits for referee training).
- AYSO is a volunteer organization; volunteers are needed (spectators might need reminding that they are needed!)
- With assistance, the referee makes fewer compromises.

DSC with One Referee

- What is impact of club linesman?
- Referee can focus on priorities: goals, fouls, offside
- Club linesman provide assistance for balls going over the touchline.

Instructions for Linesmen

- Where they move (along half of touchline)
- What they signal (ball in and out of play ONLY)
- How they signal (flag straight up)
- What's "in" and what's "out"?
- How to handle linesman who "knows offside"?
- What about the goal line?

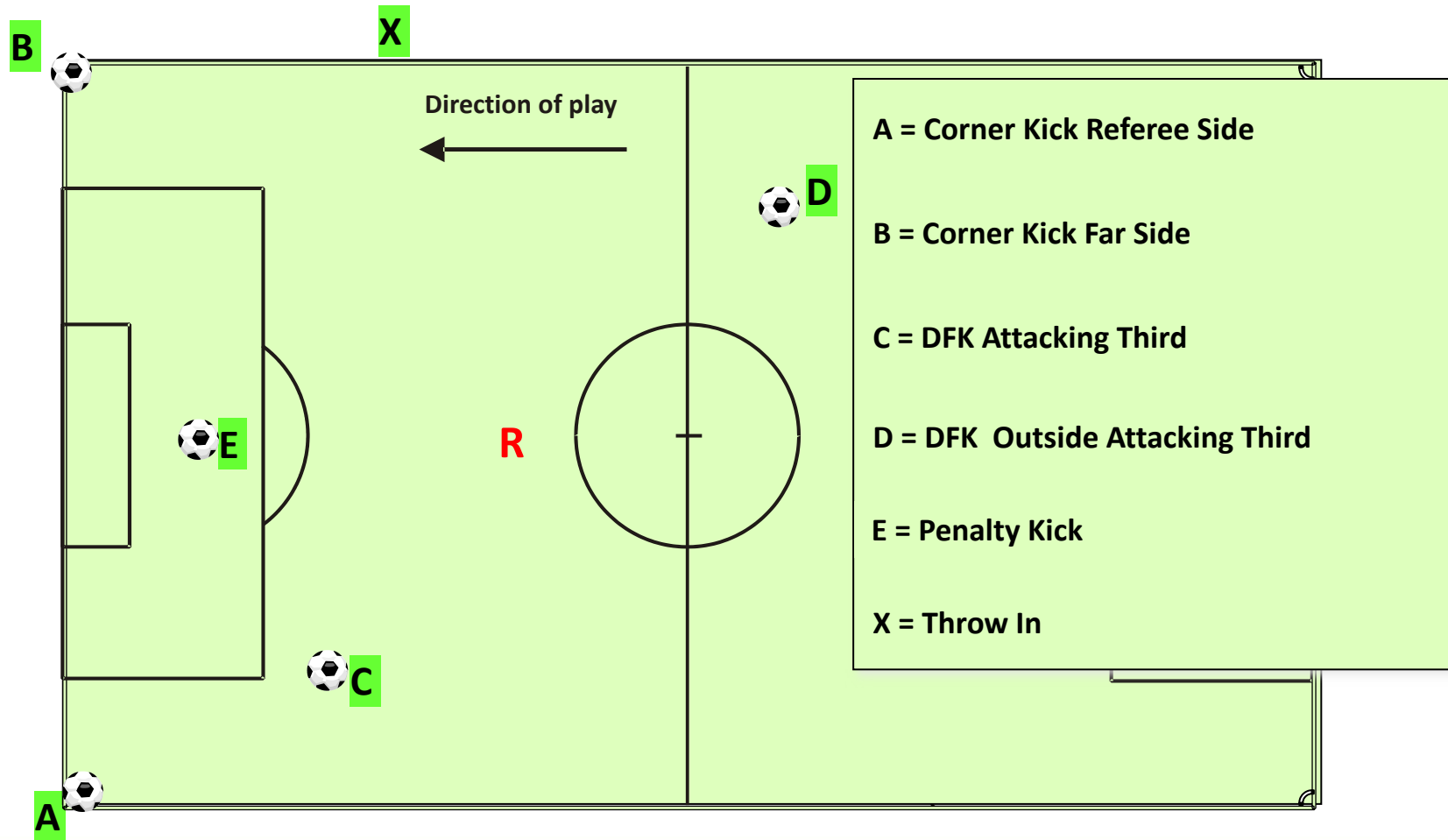
Acknowledge Club Linesman Efforts

- Thank them for volunteering prior to starting the match
 - Make them a part of the team
- Include them, if possible, in any half time referee team discussions
- Thank them at the end of the match

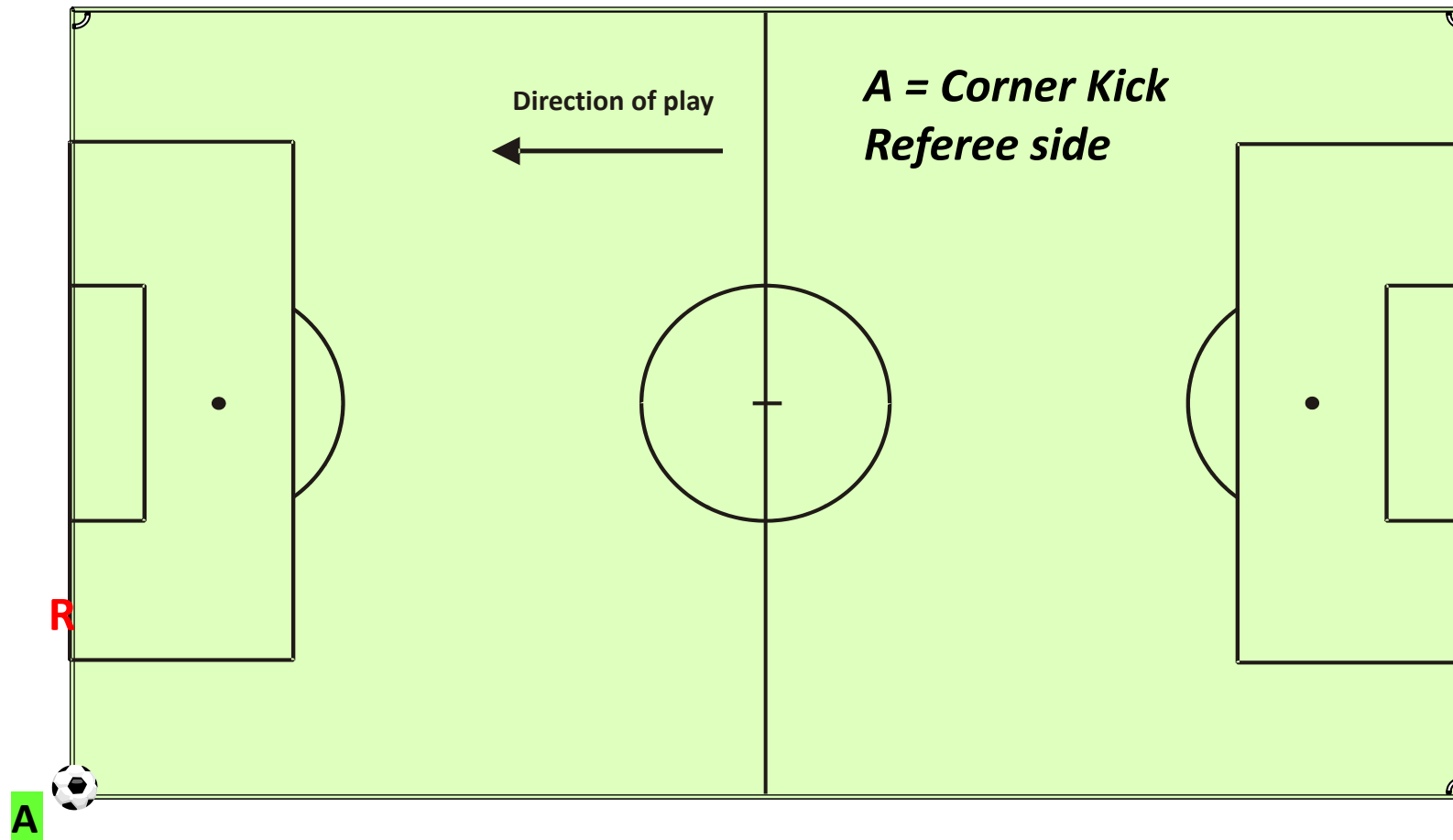
Restart Position without AR



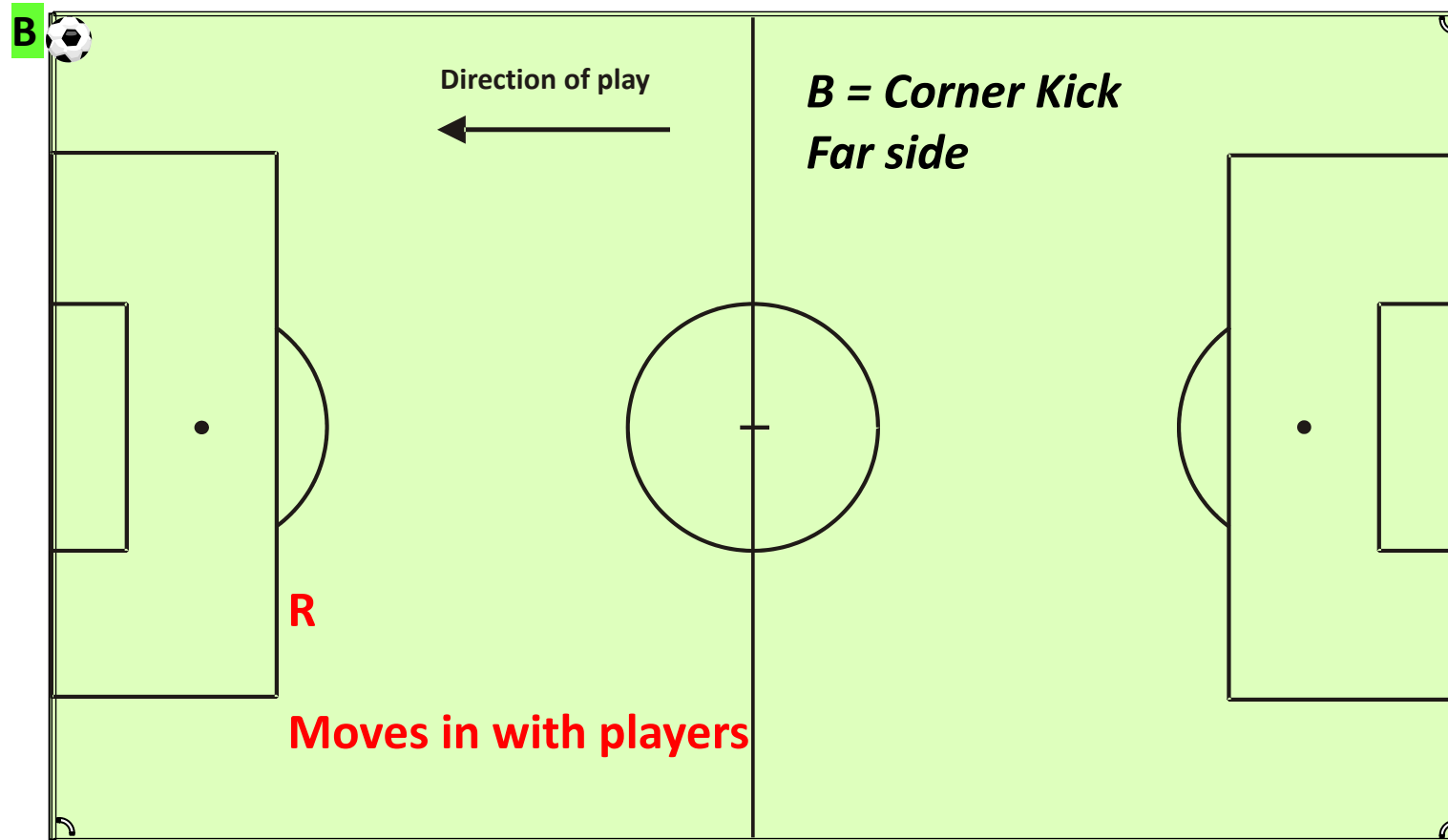
DSC with One Referee: Positioning



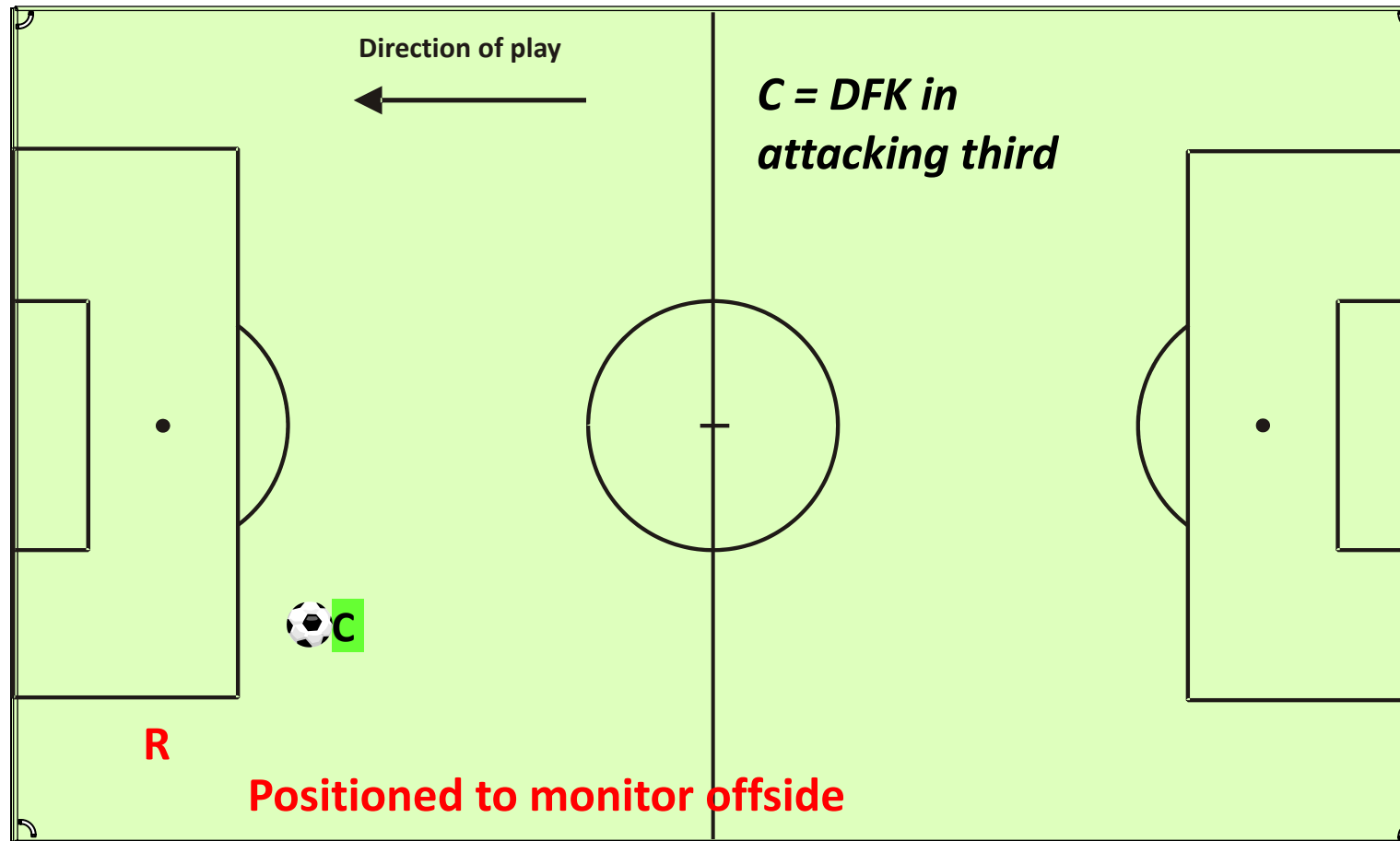
DSC with One Referee: Positioning



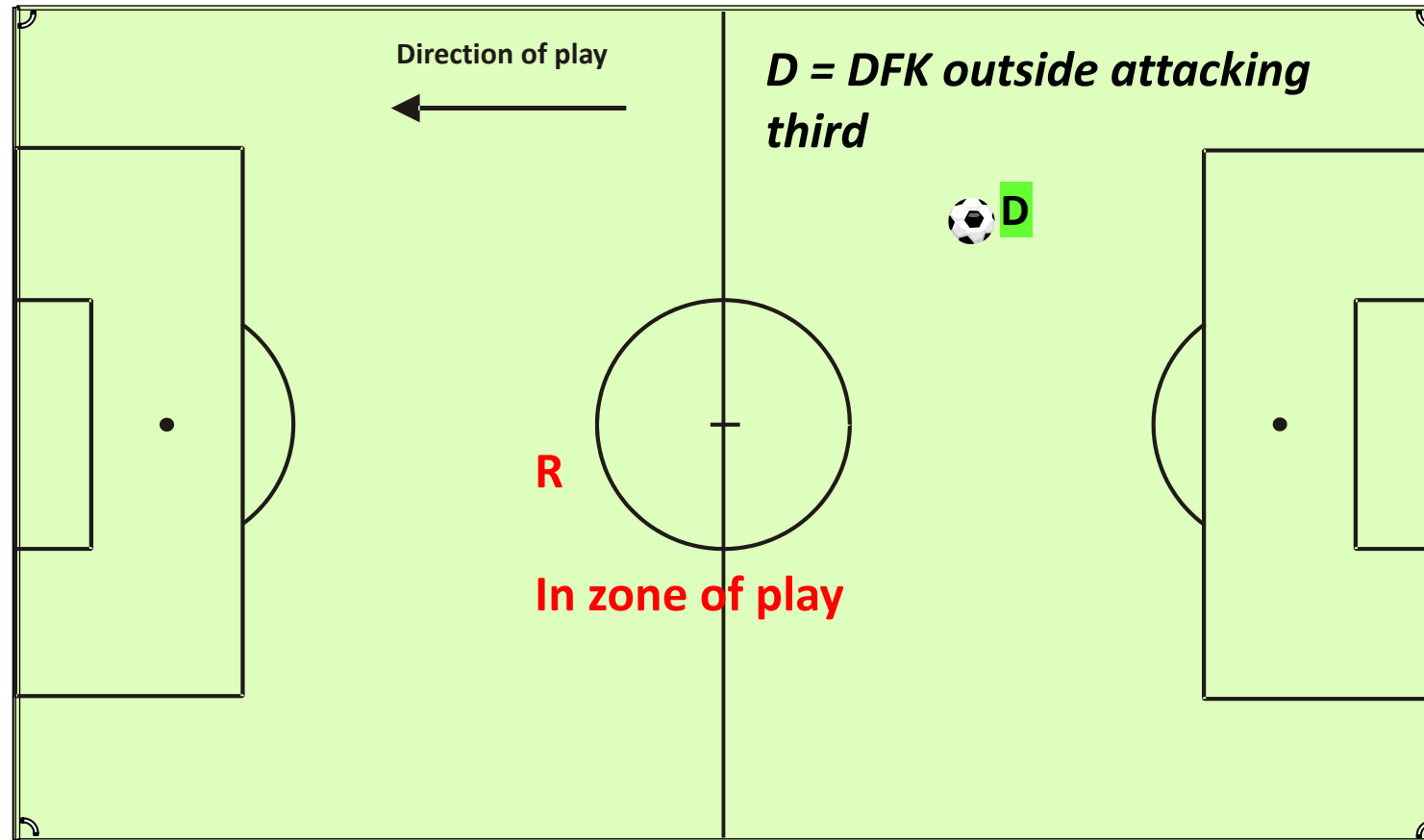
DSC with One Referee: Positioning



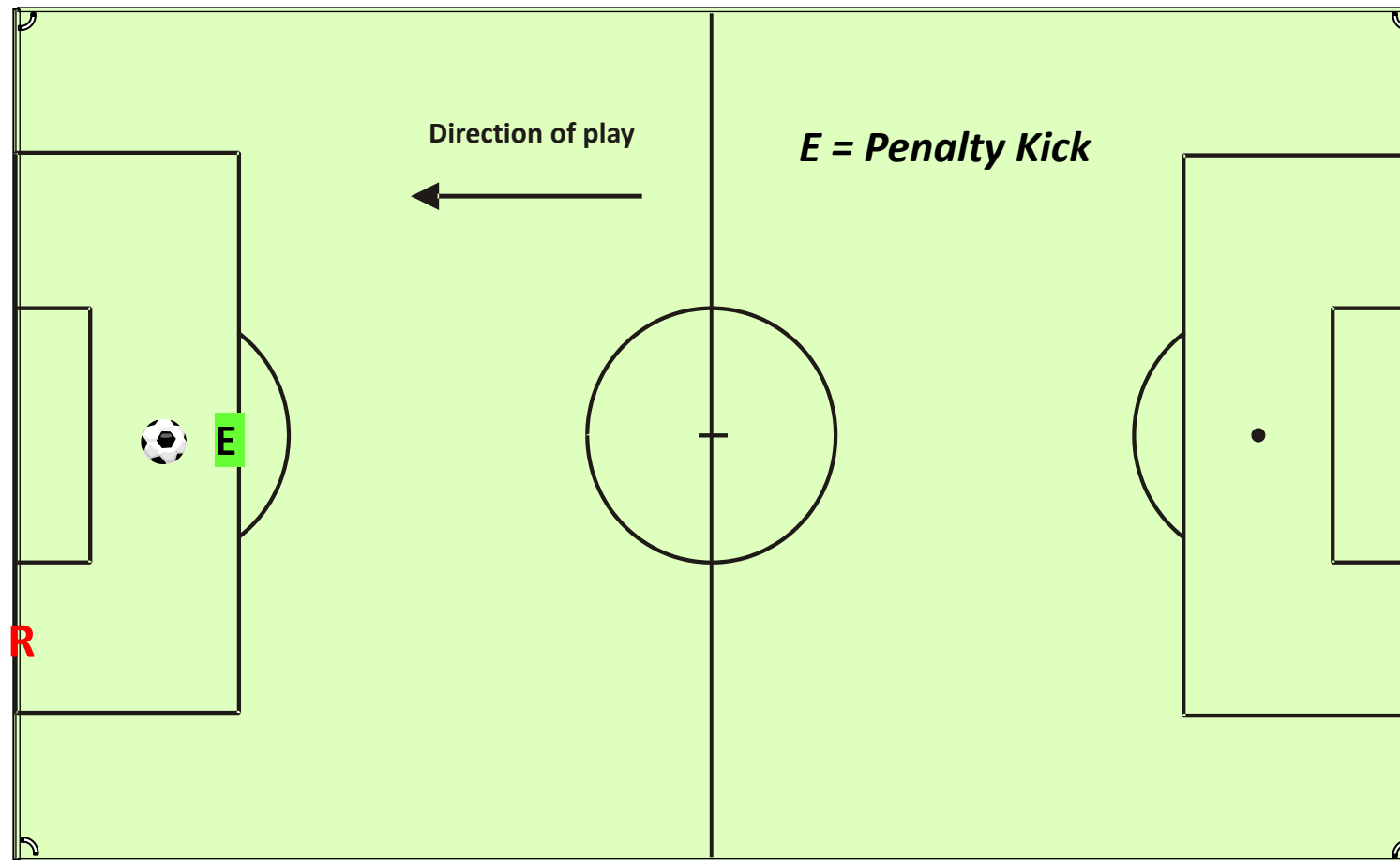
DSC with One Referee: Positioning



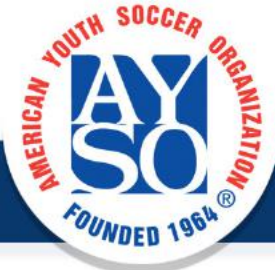
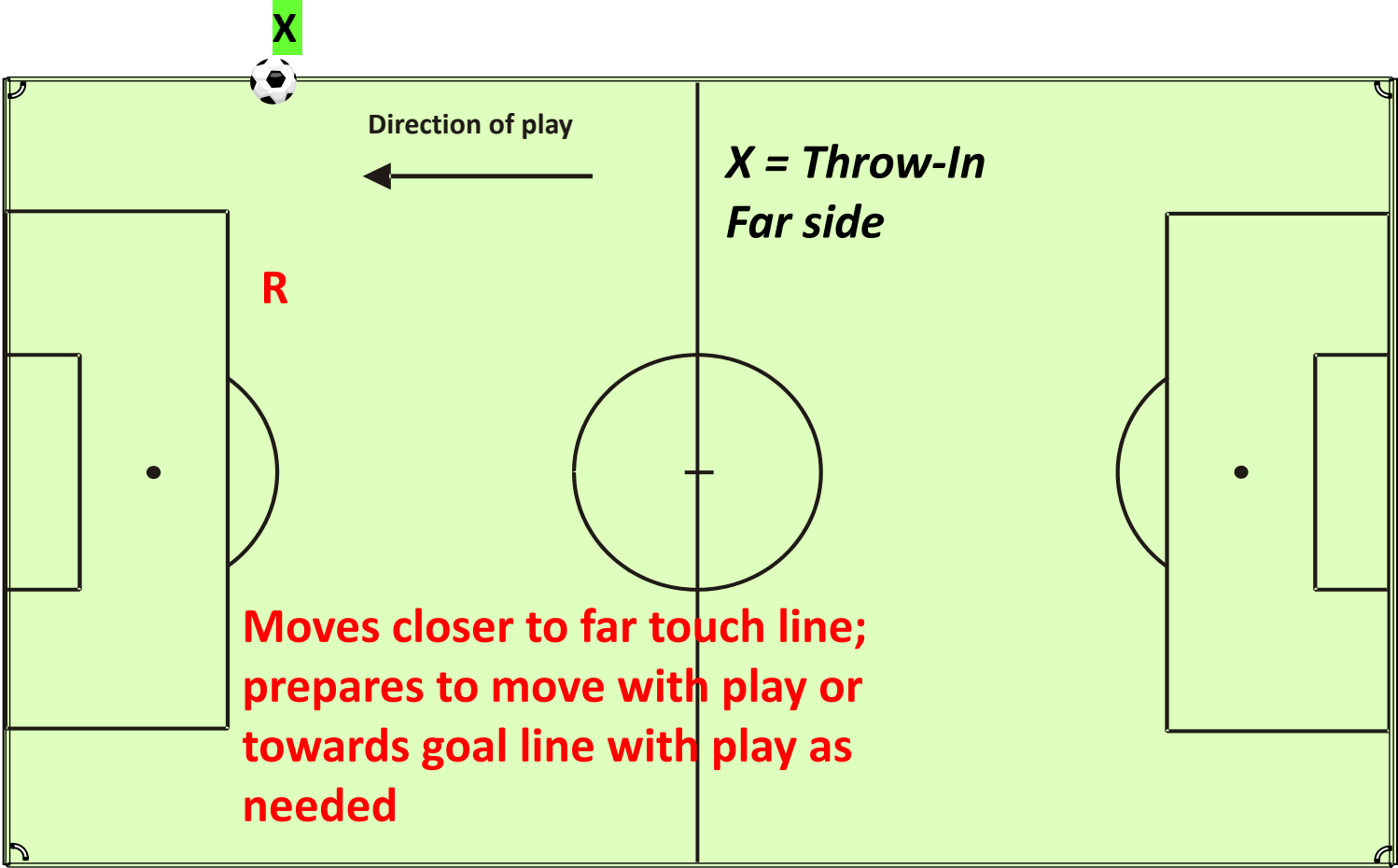
DSC with One Referee: Positioning



DSC with One Referee: Positioning



DSC with One Referee: Positioning



DSC with One Referee

- Recommendation: Avoid doing games solo: get two club linesmen!

DSC with Two Neutral Officials

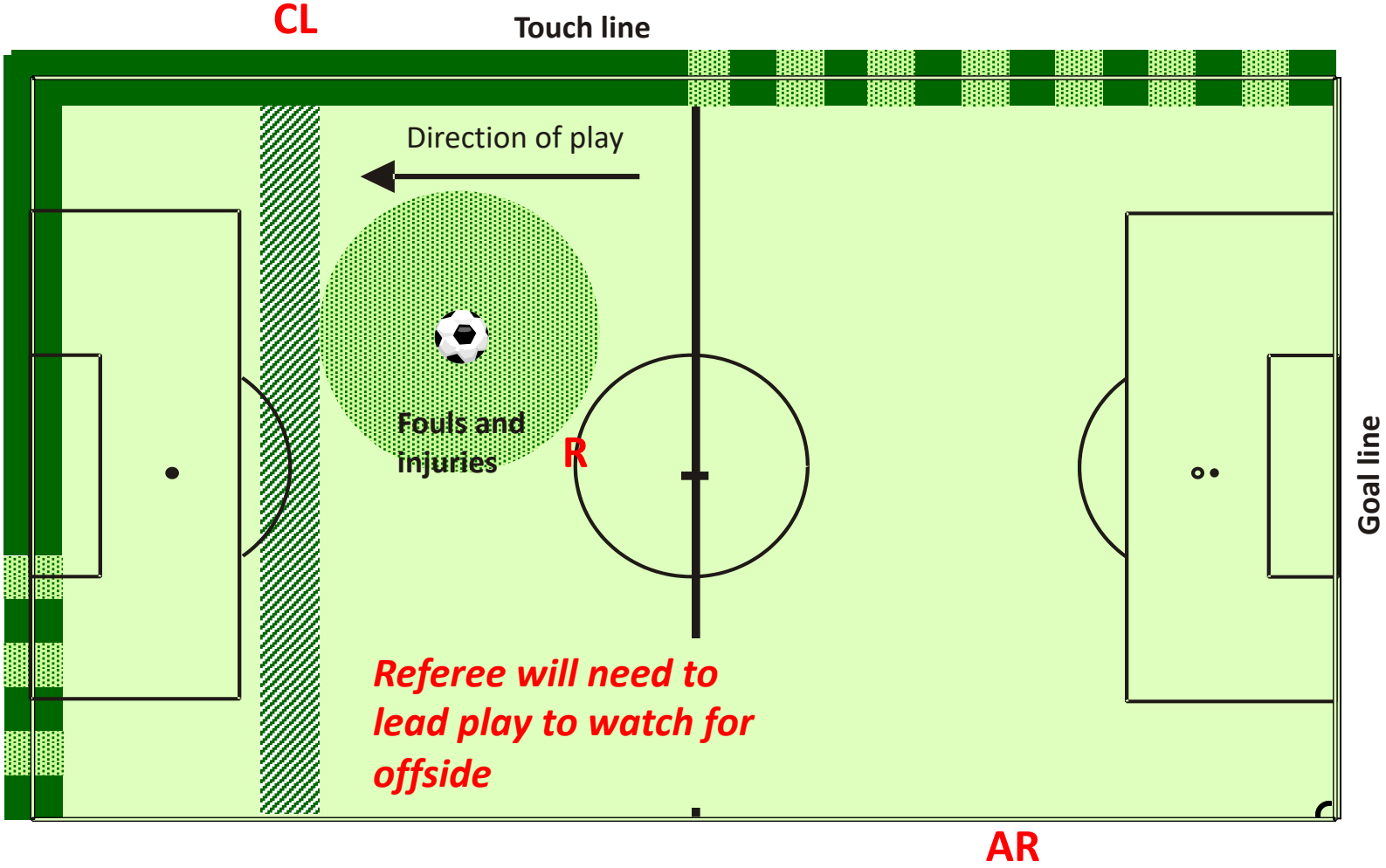
- One is the referee, one is an assistant referee
 - AR will be given additional responsibilities during pre-game conference.
- A club linesman is used on the other touch line.
- This is the only acceptable configuration.

The dual system (two referees on the field with whistles) is not authorized for use in AYSO matches!

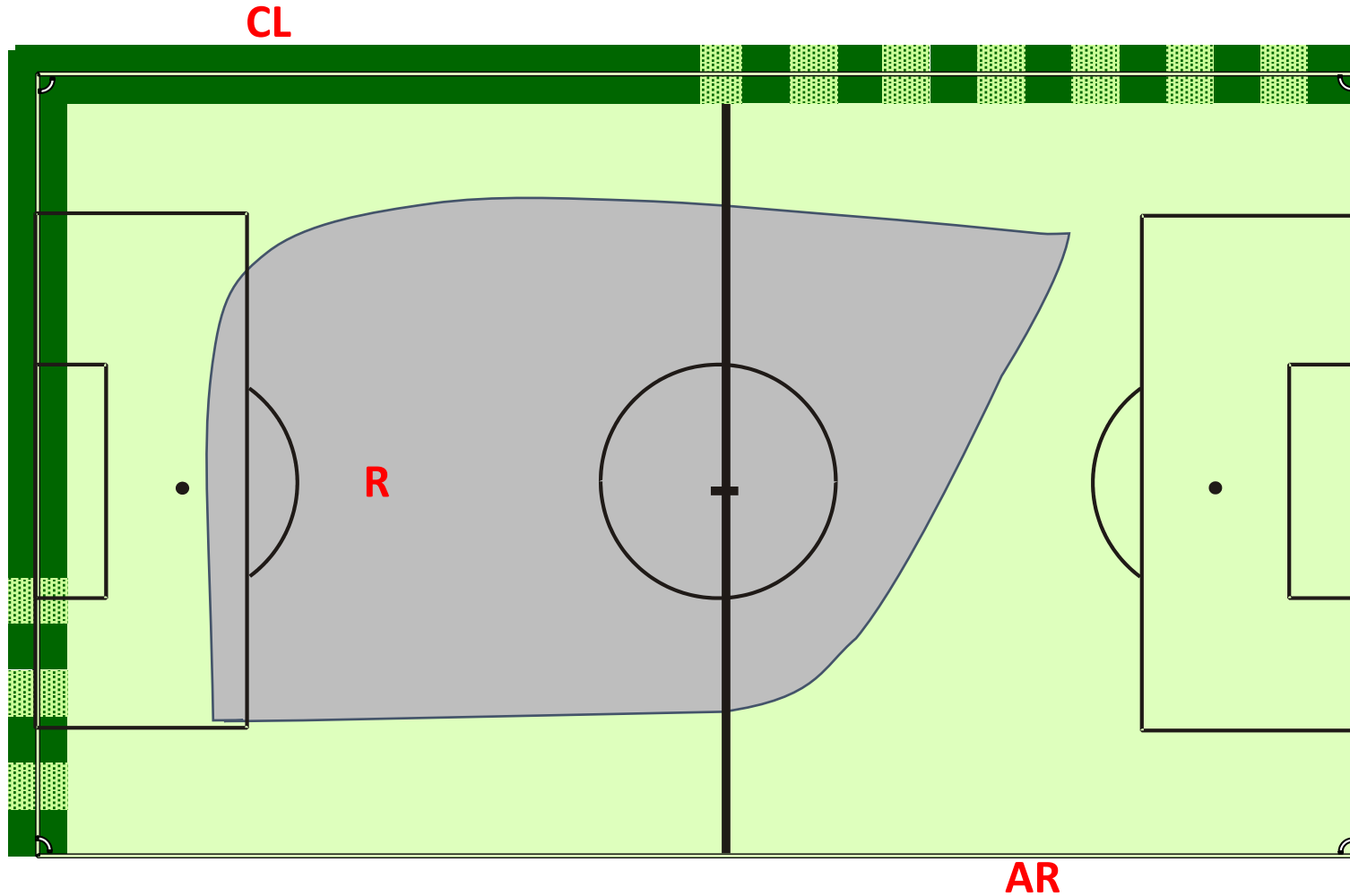
How Can AR Provide Additional Help?

- Be prepared to manage whole half while referee recovers from deep position in club linesman's half
- Help with fouls/misconduct outside own quadrant
- More proactive managing player behavior
- Ball in/out further into Referee's quadrant

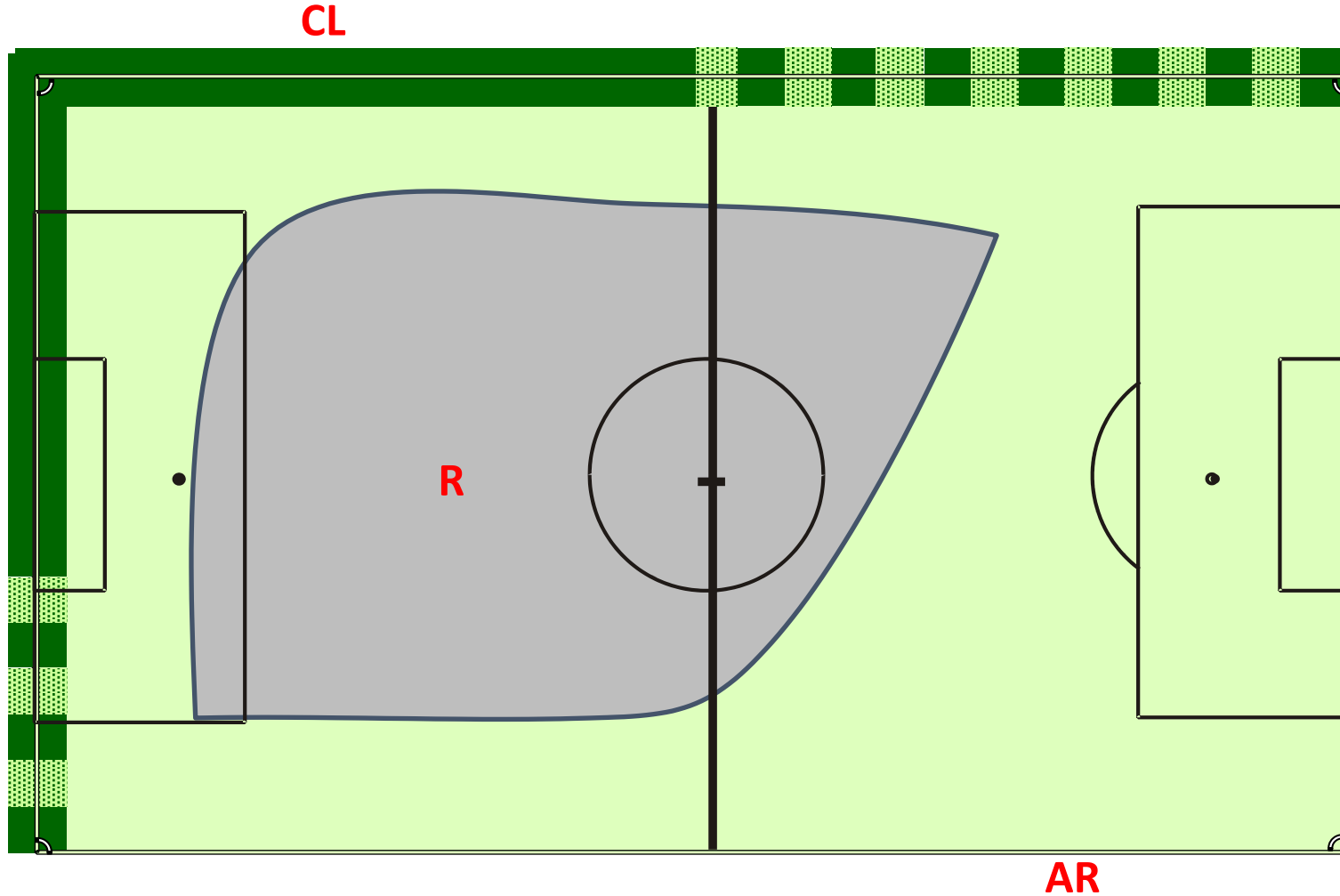
DSC with Two Officials: Positioning



Two Officials: Idealized Referee Coverage



Two Officials: Realistic Referee Coverage



Fewer Than Three: People Management

Younger players' games

- Focus on the adults
- Have pre-game discussion with coaches

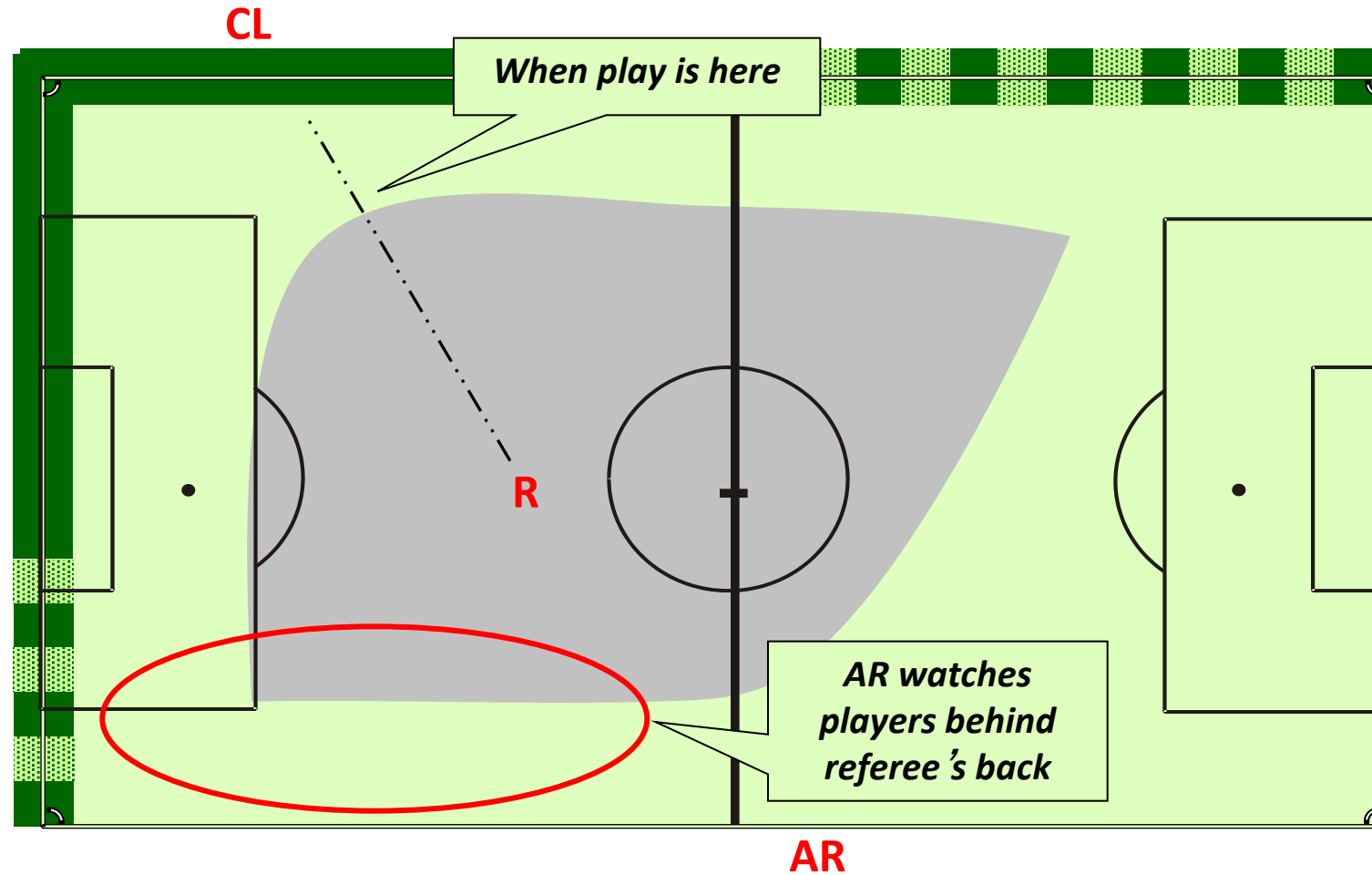
Older players' games

- Pre-game w/coaches
- Focus on players
 - “Sign up” the players for low offside expectations
- Limit use of advantage
- Failure to detect fouls can lead to loss of control

Fouls Off-the-Ball

- Identify problem players early
- Be nearer to problem players
- Take a wider position to see more
- Ask AR (not club linesman) to watch players
- Speak to players early; prevent escalation
- Consider cautioning earlier than usual

Two Officials: AR Helps with Problem Players



Summary

- Refereeing with fewer than three referees is a compromise.
- Use principles of the DSC to adjust position to compensate.
- Set priorities and position yourself to maximize your ability to judge goals, offside and fouls.
- A club linesman is an asset.

And remember: the dual system is **not** authorized for use in AYSO!

Questions?

EVERYONE PLAYS®

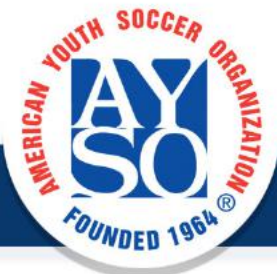
BALANCED TEAMS

OPEN REGISTRATION

POSITIVE COACHING

GOOD SPORTSMANSHIP

PLAYER DEVELOPMENT



Thank you for Attending!



Scan the QR Code to provide feedback!



Refereeing with Fewer
Than Three

EVERYONE PLAYS®

BALANCED TEAMS

OPEN REGISTRATION

POSITIVE COACHING

GOOD SPORTSMANSHIP

PLAYER DEVELOPMENT

